

# THOMASSON PLAT

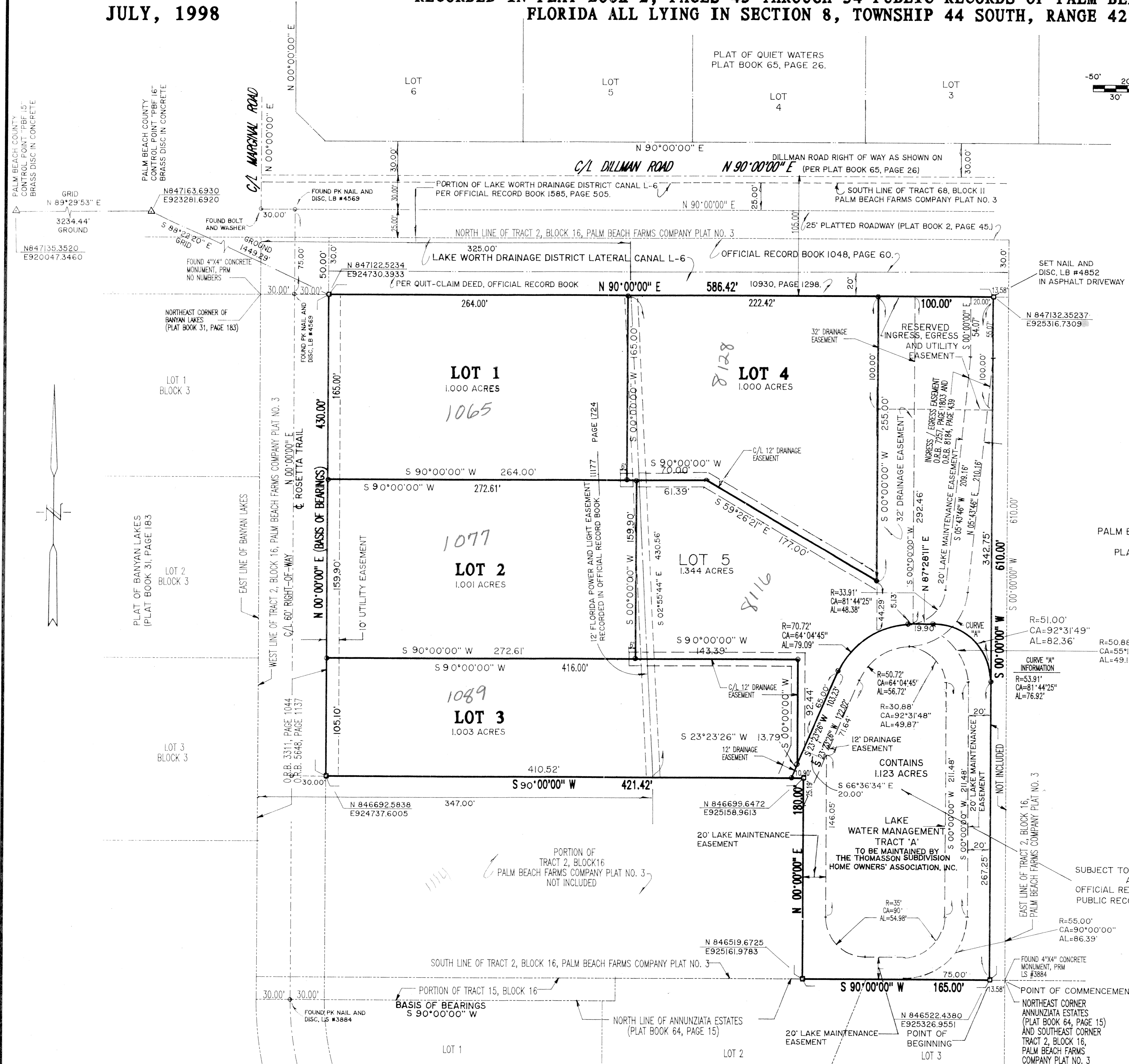
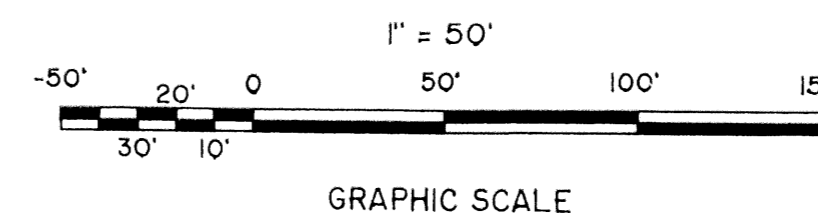
BEING A REPLAT OF A PORTION OF TRACT 2, BLOCK 16, PALM BEACH FARMS COMPANY PLAT NO. 3  
 RECORDED IN PLAT BOOK 2, PAGES 45 THROUGH 54 PUBLIC RECORDS OF PALM BEACH COUNTY,  
 FLORIDA ALL LYING IN SECTION 8, TOWNSHIP 44 SOUTH, RANGE 42 EAST.

JULY, 1998

0715-001

SHEET 2 OF 2

STATE OF FLORIDA  
 COUNTY OF PALM BEACH  
 This Plat was filed for record at \_\_\_\_\_  
 M. this \_\_\_\_\_ day of \_\_\_\_\_, 2000  
 and duly recorded at Plat Book No. \_\_\_\_\_  
 on Pages \_\_\_\_\_ through \_\_\_\_\_  
 Dorothy H. Wilken, Clerk of the Circuit Court  
 By: \_\_\_\_\_ D.C.



### LEGEND

- R ..... DENOTES RADIUS
- CA ..... DENOTES ANGLE
- AL ..... DENOTES ARC LENGTH
- O.R.B. .... DENOTES OFFICIAL RECORD BOOK
- C/L ..... DENOTES CENTERLINE

### COORDINATE NOTE:

STATE PLANE COORDINATES SHOWN ARE GRID DATUM, NAD 83,  
 1990 ADJUSTMENT, FLORIDA EAST ZONE.  
 LINEAR UNIT = U.S. SURVEY FOOT  
 COORDINATE SYSTEM 1983 STATE PLANE TRAVERSE MERCATOR  
 PROJECTION  
 ALL DISTANCES ARE GROUND (UNLESS OTHERWISE NOTED)  
 SCALE FACTOR = 1.0000238  
 GROUND DISTANCE x SCALE FACTOR = GRID DISTANCE

N 90°00'00" E (PLAT BEARING) 00°57'37" COUNTER-CLOCKWISE  
 N 89°02'23" E (GRID BEARING) BEARING ROTATION  
 PLAT TO GRID

Subdivision Thomasson Plat  
 BOOK 87 PAGE 171  
 FLOOD MAP # 1-0-0-A  
 ZONING RE  
 QUAD # 47  
 SE 74-100  
 TAZ 733  
 PUD NAME Thomasson Plat

**K & N SURVEYORS, INC.** LB #4852  
 P.O. BOX 210334  
 West Palm Beach, FL, 33421-0334  
 9040 Belvedere Rd., West Palm Beach, FL, 33411 Tele (561) 798-5005  
**THOMASSON PLAT**